

شركة المشتري Jupiter Co Pvt. Ltd.

نعمة التقنية The Boon of Technical



JEMS in marine Industry

Jupiter commenced operations in Salmabad, Bahrain in 1988. Since our inception, we have been providing services to the marine and industrial sectors, for local and international clients. The company has grown to become a financially secure full service marine and industrial fabricating/repair organization. Jupiter provides services in the installation, repair, and preventative maintenance of all mechanical, electrical and piping systems. The company offers metal fabrication on smaller components and ship building capabilities in aluminum construction.

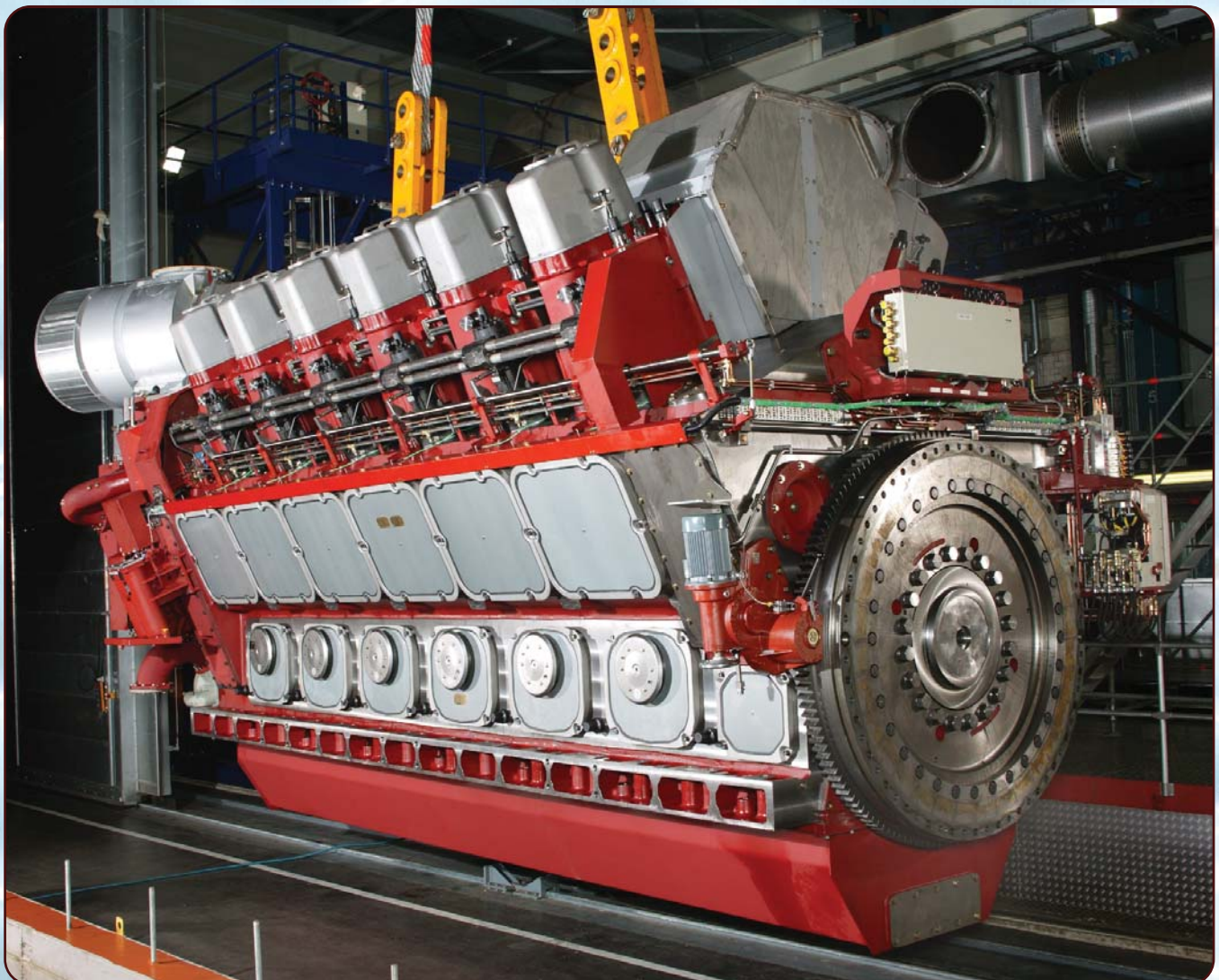
Our Branches in Bahrain-Salmabad, Saudi-Dammam, Qatar-Doha, UAE-Dubai, Singapore-Jurong and China-Shanghai.

Our Mission

Jupiter delivers innovative, engineered solutions and specialised products and services to the marine industry; creating value for its key stakeholders.

Our Vision

To be admired as a global market leader delivering innovative solutions to the marine industry, while meeting the changing requirements of worldwide customers and investors; rewarded through significant financial growth and human development



Our Services

Structure Works

Our employees are steel and aluminum specialists who deliver top-quality results in full compliance with industry standards. We offer the following services:

- Sheet metal forming
- Framework
- Replacement of ship sections
- Welding & Structural reinforcement

Renovation

With the following services, we can give your ship a new lease on life, inside and out.

- Wheelhouse renovation
- Instruments and electronic devices
- Hardware
- Sandblasting and painting
- Other finishing materials

Refitting

Using plans you provide or plans from naval architects working with us, Ocean can carry out the following types of modifications to your ships:

- Structural modifications
- Rejuvenation of ship's appearance
- Changing the ship's vocation

Re-motorization

From the smallest pipe to the entire engine room, Ocean has the know-how necessary to re-motorize your ship, working at the mechanical, electrical and electronic levels.

Propulsion

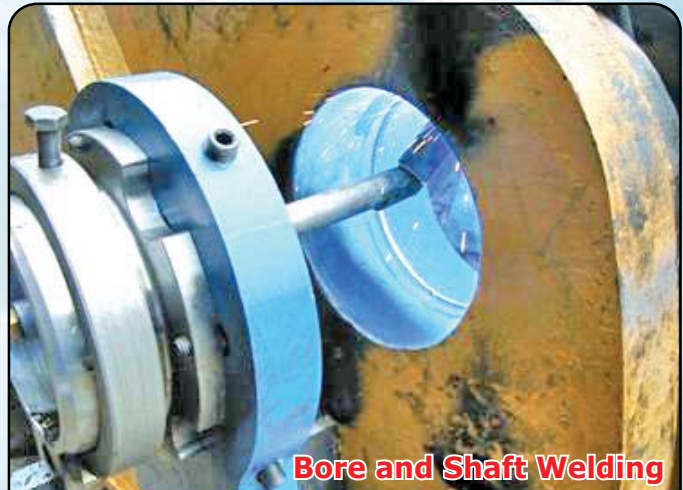
Ship propulsion systems have evolved during the past years, and Ocean has evolved along with them. No matter what propulsion system your ship uses, Ocean has expert mechanics who can fix it.

- Conventional propulsion or Controlled-Propeller Pitch (CPP)
- Turbine propulsion
- "Z-Drive" type propulsion (azimuthing)
- Voith-Schneider propulsion

Inspection

All work performed by Ocean meets Transport Canada's standards and, when applicable, the standards of any classification society designated by our customers. Ocean can also carry out many of the tests approved by those societies, including the following:

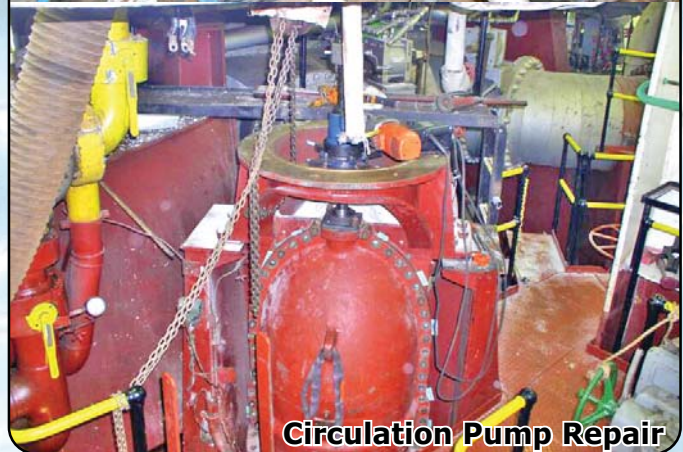
- Hydrostatic testing
- Magnetic particle inspection
- Ultrasound inspection
- X-Ray inspection
- Thickness measurement
- Vacuum box testing



Bore and Shaft Welding



Journal repair



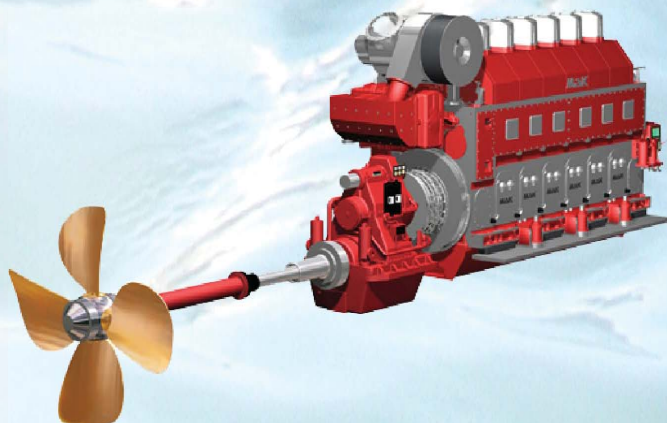
Circulation Pump Repair

Propulsion Systems

Controlled Propeller Pitch

A fixed propeller designed for maximum speed can not give power at low speed. Conversely, a fixed propeller designed for power can not give maximum speed. A controllable pitch propeller, however, gives both maximum speed and maximum power.

It is always possible to achieve maximum engine efficiency regardless of the vessels employment. Maximum power can be taken from the engine without overloading by changing the pitch.



Slip Ring Systems

Slip rings or slip ring collectors are used in rotating electric machines. This segment includes 3-phase AC motors, asynchronous motors or slip ring rotor motors that are among the main fields of application.

Working, control, signal and measuring currents are thus transmitted from stationary to rotating components.



Conventional Propulsion System

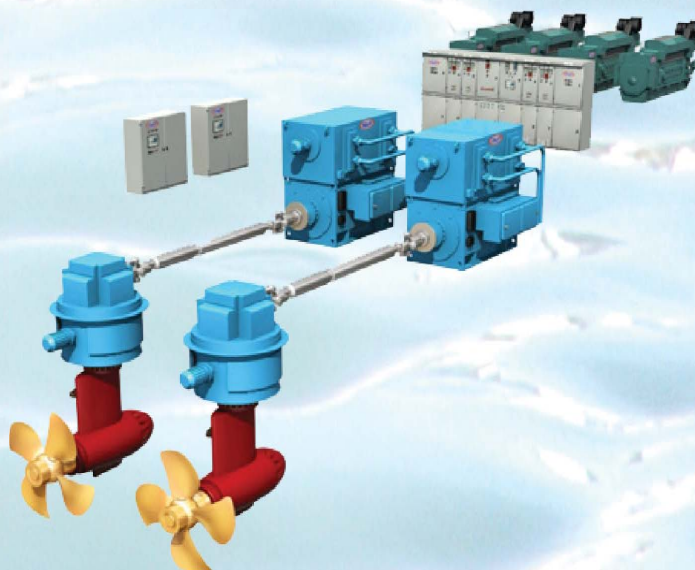
The integrity of the entire propulsion chain from the motive unit (motor or engine) through to the propeller relies on effective sealing systems. Whether keeping oil in hard working line shaft bearings or preventing seawater ingress through the stern tube, correct seal profile & optimised material selection are vital to efficient equipment



Electrical Propulsion

The shipping industry has come a long way as far as R & D for reducing costs of propulsion without increasing marine pollution is concerned. The conventional propulsion system of the ship is efficient but requires high operating costs and increases the marine pollution. Among all the prospective alternate power sources, electrical propulsion system is one of the best tried out alternative in today's time.

The electric propulsion system consists of a prime mover which may be of two types: Diesel driven, Turbine or steam driven



Propulsion Systems

Azimuth thruster

An azimuth thruster is a configuration of ship propellers placed in pods that can be rotated in any horizontal direction, making a rudder unnecessary. These give ships better maneuverability than a fixed propeller and rudder system.



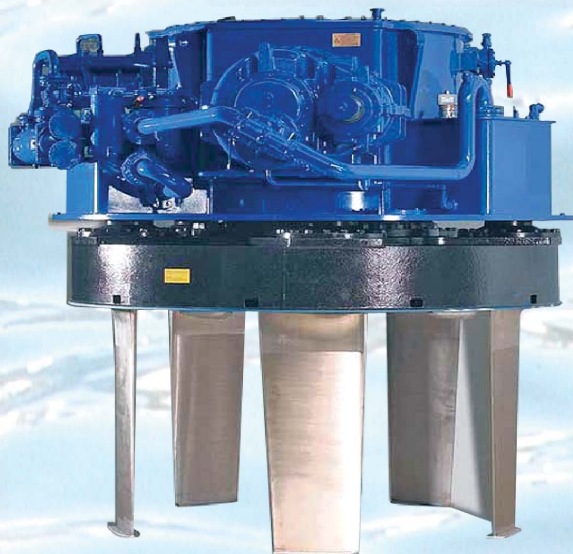
Schneider Propulsion

The Voith Schneider propeller (VSP), also known as a cycloidal drive (CD) is a specialized marine propulsion system (MPS). It is highly maneuverable, being able to change the direction of its thrust almost instantaneously. It is widely used on tugs and ferries.



Schneider Propulsion

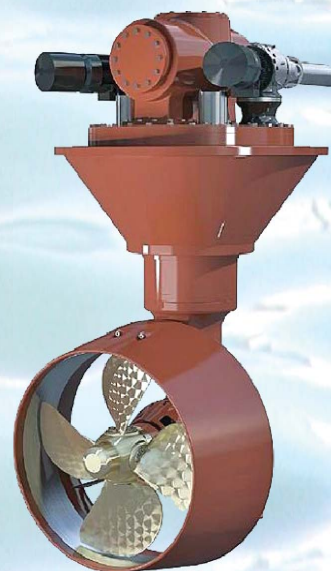
The Voith Schneider Propeller (VSP), also known as a cycloidal drive (CD) is a specialized marine propulsion system (MPS). It is highly maneuverable, being able to change the direction of its thrust almost instantaneously. It is widely used on tugs and ferries; but in recent years, it has also been used in offshore vessels, like Platform Supply Vessels, or even in Offshore Accommodation Vessels. Therefore, it is assumed that it could also be a good propulsion system for a structure for colonizing the ocean.



Z-Drive Propulsion

This is the most advanced option when maneuverability is really valuable to the vessel since these systems turn 360 ° and thrust can be directed at any direction. They come with or without nozzles, applies for commercial vessels operating under 14 knots.

The Z-Drive gives full thrust power over a circle of 360°, thus enabling a maximum maneuverability of the vessel. With its wide differentiation of types over the years, the Z-Drive offers a solution for numerous applications.



Bow Thruster and Marine Propulsion Outboard Drive Systems

Jupiter are constructed of the highest quality marine parts resulting in unsurpassed durability. We use tapered roller bearings, special seals, pressurized oil for lubrication and cooling, SAE 4140 steel shafting, precisely engineered shim sets, bronze components, and other premium features. Simplicity of design reduces incidents of repair and minimizes costs when repairs are necessary. Propulsion Drive Systems are common applications for the Jupiter Marine Outboard Drives.

Jupiter also maintains spare marine parts to service all marine propulsion equipment. Customers worldwide benefit from Jupiter top notch and world recognized Service Department. Navies around the globe rely on Jupiter expertise for performing on-site field service of their marine propulsion equipment.

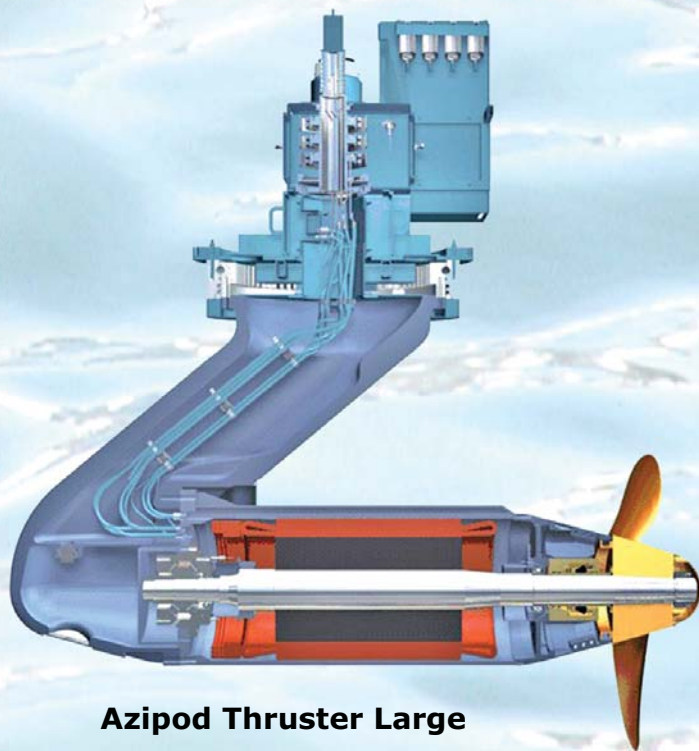
Jupiter Bow Thrusters and Outboard Drives that are right for you. We invite you to look over our quality Bow Thrusters and Outboard Drives today.

Propeller Repairs

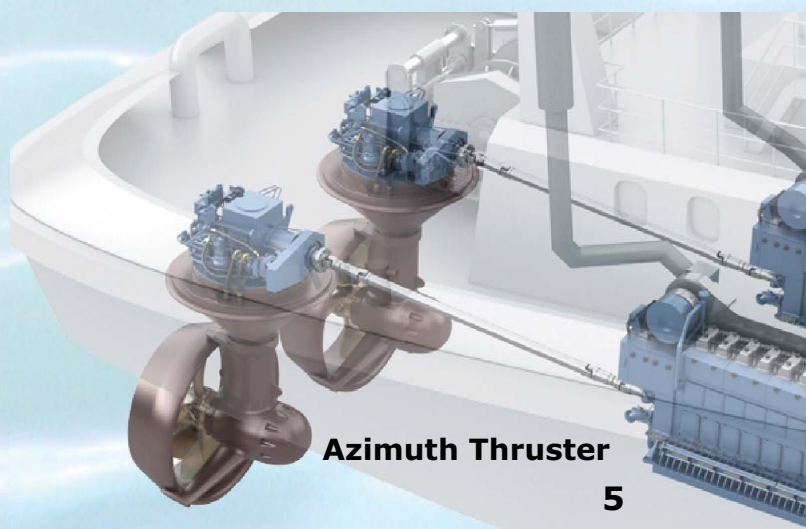
Jupiter are able to carry out repairs to all types of Fixed Pitch Propeller and CPP blades / Hubs. Typical repairs include straightening of bent tips, tip replacement, weld repair of cracks, rebalancing and polish finishing. Aluminium, Aluminium / Bronze and Nickel / Aluminium / Bronze propeller materials are the most common types in use. We can advise on repairs to any different type of material.

All welding is carried out by class approved welders using specialised procedures and heat treatments. Jupiter can provide a comprehensive world-wide repair service carrying out in-situ repairs, or dedicated repairs within our workshop.

Jupiter have very experienced Repair Specialists who have more than 25 years of knowledge. Jupiter will repair propellers and blades in most locations in Asia.



Azipod Thruster Large



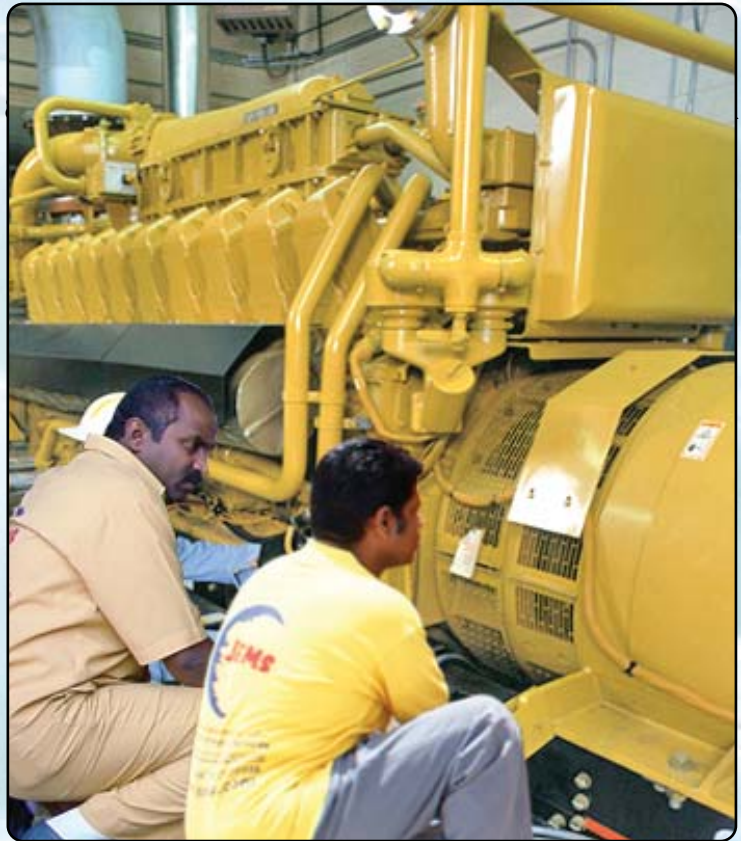
Azimuth Thruster

Supply used & new equipments

We Import & Supply all kinds of Used Consumables.

We import, exort, Sell, Buy, Lease

- 1) Main & Auxillary Engine & Spares
- 2) Diesel Generator Sets
- 3) Turbo Charger & Spares
- 4) Oil Purifier & Spares
- 5) Compressor & Spares
- 6) Pneumatic Equipments
- 7) Deck & Engine Stores
- 8) Navigation & Marine Electronics
- 9) Hydrualic & Pnematics
- 10) Anchor, Chains, Fenders & Winches



Rental & Long leasing

We are specialising in the hire of winches, mooring systems, and work boats for the marine construction industry. We can supply equipment wide for short or long term hire.

All of our Marine equipments rentals come with our high value service and customer satisfaction guarantee.

Spare Parts & Accessoriess

Our parts centers are supply replacement parts for all makes & models of Marine equipments even older machineries that are no longer manufactured.

We are also able to offer a backup unit from our hire fleet in instances where the customer's machinery is removed from service for major service work clients.

- All Brand & Non-Brand Marine eqpts.
- Electrical Electronic Control Panels
- Crankshafts & Bedplates
- Circuit boards
- Turbo Charger
- Gears
- Air Compressors
- Motors
- Oil Purifier
- Governors
- Marine Automation
- Switches & sensors
- Tools, Alternators



Marine Navigation

Whatever the size of your ship, whether you require a complete navigation package or the replacement/upgrade of an existing component, Jupiter has the technical expertise to provide a state of the art, integrated solution that won't cost the earth.

We have sourced, installed and serviced a wide array of standard and customised marine navigation equipment for leading shipping companies and ship owners over recent years.

We supply/service the following marine navigation equipment:

- Radar equipment
- MULTIPILOT / ECDIS systems
- CHARTPILOT / ECDIS systems
- VDRs (voyage data recorders)
- Integrated bridge systems
- Collision warning systems
- Autopilot systems
- Charts / plotters
- GPS / DGPS equipment
- Gyrocompasses
- Heading data
- Sonar
- Sea floor mapping
- Echo sounders
- Speed logs
- Steering systems



Marine Communication Equipment

From simple UHF radios through to state of the art hybrid satellite broadband systems, Jupiter caters for a diverse range of Jupiter communication needs.

Whether you need a complete unit, spares or servicing, our close ties with industry leaders such as Inmarsat and Iridium enable us to offer a state of the art, cost-effective solution that will maximise your communications capabilities.

Jupiter marine communication equipment range covers:

- Fixed and stabilised satellite systems
- Handheld VHF/UHF systems
- MF/HF systems
- Data compression
- IT networks
- Airtime
- Intercom systems
- IP networks
- GSM pico cells
- Navtex
- Weatherfax
- GSM pico cells
- Telemetry/SCADA
- Video conferencing
- Fibre optic systems
- Telephone exchange



Ship's Bridge Consoles

In a recent study it was found that over 80% of collisions at sea were due to crew not being aware of available information.

An ergonomically designed bridge console that coherently presents the various data available to seafarers is not only crucial to a ship's safety, it also makes for a more comfortable working environment.

Whether you need a complete unit, replacement parts, servicing or upgrades, Britannia Marine will prove a reliable partner in all of your bridge console needs. With extensive know-how in the field and an array of trusted suppliers at our fingertips, we won't let you down.

Our ship bridge console range covers:

- Automatic identification systems - AIS
- Dynamic positioning
- GPS and reference systems
- GPS tracking system
- Integrated workstations
- Joystick control systems
- Log electronic logbooks
- Navigator safety system
- Radar and navigation systems
- Refit / retrofit / conversions
- Ship information systems
- Thruster control system
- Voyage data recorders

Marine Automation

Marine automation is anything that simplifies operational activities on a ship. Not confined to auto-pilot systems, marine automation can also take the form of a CCTV network transmitting images to the bridge, or perhaps temperature regulation on a reefer (perishable food container) vessel, to give but two examples.

Jupiter has implemented various marine automation systems for several high profile clients in recent years, saving them vast amounts of man hours (i.e. monitoring/maintenance) whilst drastically improving safety - all the more important in today's stringently monitored marine industry.

We supply/service the following marine automation systems:

- Alarm and monitoring
- Monitoring and process Control
- Electronic governance
- Power management
- Reefer container monitoring
- Propulsion control



Deck Cranes

Whatever you're looking for - be it a space saving telescopic deck crane, a large scale stiff boom deck crane to assist with heavy duty cargo, or maybe something customised to specific ship requirements - our experience and contacts will allow us to provide a high quality, cost-effective deck crane solution that will exceed expectations.

As with all our products, we offer comprehensive deck crane servicing and spare parts supply - either as a service in itself or as part of our after-care support, with emergency response a speciality.

We supply the following types of deck crane:

- T-shaped cranes
- Knuckle boom cranes
- Stiff boom cranes
- Telescopic boom cranes
- Articulated telescopic boom cranes
- Dredge support cranes



Affordable Marine Winch Solutions

With nearly two decades in the industry backed up by genuine engineering know-how, Jupiter is well placed to provide you with a progressive, customised marine winch solution that meets both technical and budgetary requirements. We also provide winch parts and servicing, with emergency response.

We supply the following types of marine winches and related products:

Mooring Winches, Tugger Winches, Anchor Handling Winches, Transponder Winches, Towing Winches, Chain stoppers, Cargo securing winches, Spooling winches, Umbilical winches, Hose reel winches.



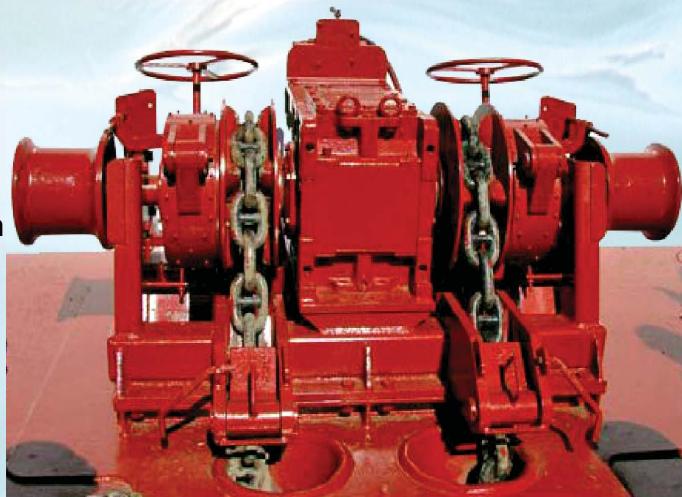
Marine Windlass Supply

Here at Jupiter we're well aware of the various factors that determine what type of windlass you require. It's not just about vessel size/type - other considerations include the conditions in which it will be used and the experience level of the crew who will be operating it...

With our two decades of marine industry experience backed up by genuine engineering know-how, we can help you make an informed choice, saving you time and money down the line. and if its parts supply and servicing you're after we can do that too - at very reasonable rates and within short time-frames.

We supply the following types of windlass:

- Electric or hydraulic drive windlasses
- 30 tonnes rated pull
- Single, split or double drum configuration windlasses
- Up to 160mm chain size
- Manually operated clutch windlasses
- Manually operated band brake
- Local and/or remote control operation



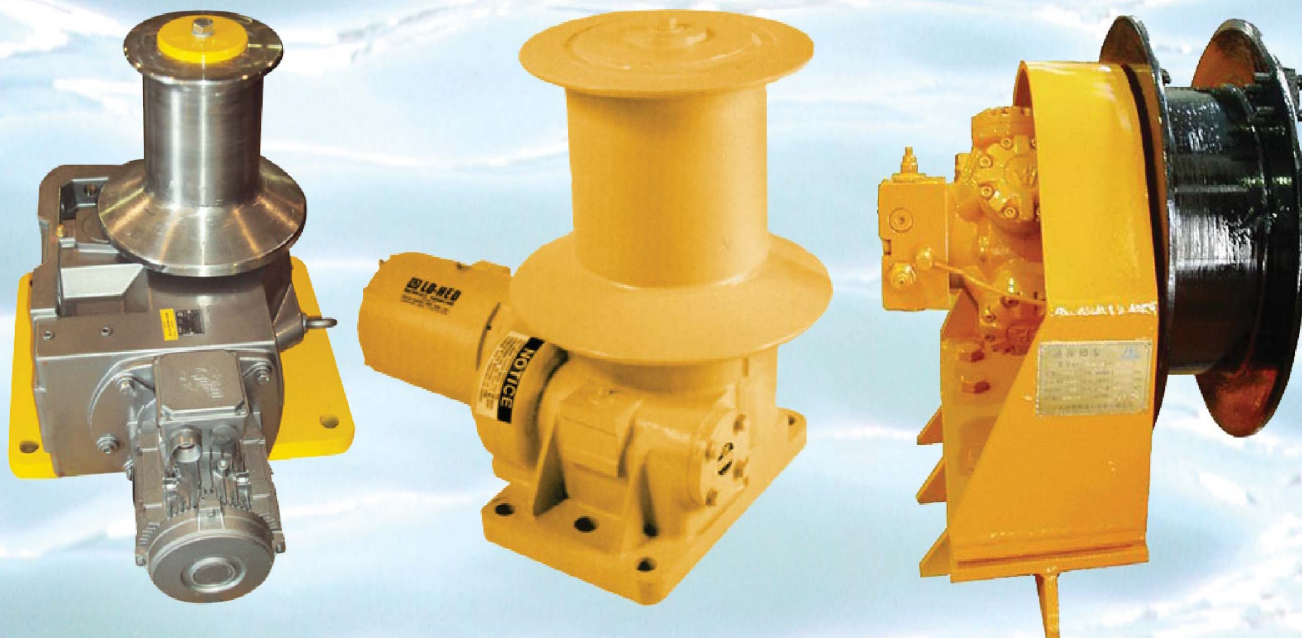
Marine Capstans - Electric/Hydraulic

Britannia Marine can supply both electric and hydraulic capstans ranging in capacity from 3 to 20 tonnes. An electric capstan will utilise frequency converters to allow speed variation while a hydraulic capstan would generally be preferred where space is limited.

As with all our products, we offer comprehensive capstan servicing and parts supply - either as a service in itself or as part of our after-care support, with emergency response a speciality.

We supply the following types of capstan

- Electric or hydraulic drive
- Vertically or Horizontally mounted configuration
- Cast steel warping head
- 3 - 20 tonnes rated pull first layer
- Up to 20m/min maximum speed
- Local control and/or remote control



Technical Services

Preventative Maintenance

Offer programs and services to help the owner or operator to produce a preventative maintenance program, and refit program to all machinery and systems. Help to produce spare parts list and advise on what to store and what not to store.

Condition Inspections

Check and analyze condition of systems and equipment through operation, maintenance records and repair records.

Technical Representation

Offer owners representation on technical matters from new construction and repairs in ship yards and repair facilities, and insurance claims as owner representative.

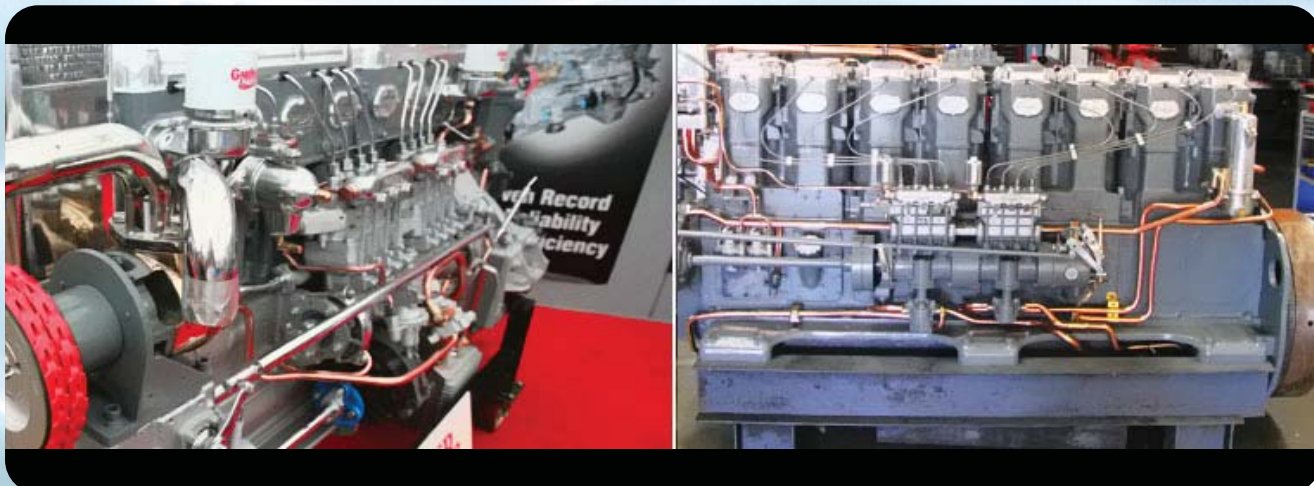


Repair Service

As well as our comprehensive team of specialist marine fabricators, heavy engineers, fitters and electricians, we will work with our trusted specialist tradespeople and suppliers, or yours, to complete your ship repair project on time and within budget.

Marine welding, hydraulic, electrical, hull and structural repairs including blast and paint services – we can arrange everything for you. More about our Marine Fabrication and Heavy Engineering Services...

Our engineers and marine fabricators have worked on hundreds of vessels. We have handled different types of ship conversions and refits, from ferries to fishing vessels, commercial to private use and more. More about Custom Ship Refits...



Hydraulic Equipment & Services

Our experience in marine/offshore hydraulics is second to none, helping us become a highly trusted name in the supply of pneumatic marine propulsion controls. From pressure and directional control valves to hydraulic power units - branded or OEM - our strength lies in possessing the know-how to choose the best products every time.

Whatever your marine hydraulic requirements - full units or parts, genuine or OEM - Britannia Marine can help you find what you need. At the right price.



Marine Fire & Security

We provide a huge range of industrial safety products at very competitive prices. Our aim is provide an efficient, comprehensive & reliable single-source fire & security solutions.

Our range covers:

- Gas Detection & Monitoring Equipment
- Breathing Equipment
- Rescue Equipment
- Fire-fighting Equipment
- Fire Alarm & Detection Systems
- Water-based Fire Systems and Pumps
- Special Fire Hazard Systems
- Resuscitation Equipment



Marine Electrical Equipment

Jupiter can provide a wide range of marine-specific electrical equipment, systems and parts. We have the experience and knowledge to help you with all of your marine electrical requirements.

With a dedicated logistics division and well earned reputation for quality of service, we're a reliable partner you can trust.

Our electrical equipment range covers:

- Electric motors
- Transformers
- UPS systems
- Electrical Heating elements and equipments
- Heaters and fans
- Distribution boards & control panels
- Circuit breakers
- Motor control centres
- Electrical Control stations
- Grounding / earthing materials & lighting
- Lighting (fluorescent, flood, well glass, bulk-head, pendant, columns, poles, towers, photo cells, lamps, hand lamps, flashlights, etc)
- Cable support and accessories (trays, ladders & supports in galvanised steel / stainless steel / aluminium, glands, adaptors, ties and banding, etc)
- Other consumable equipment (fuses, light bulbs, conduit, weatherproof boxes, etc)
- Electrical tools & parts



Marine Safety Equipment

With our in-depth knowledge of safety equipment, we're the first port of call for a wide range of clients looking to improve, meet and maintain HSE standards.

Jupiter supplies a wide range of high quality marine safety equipment, all meeting British and international safety standards.

Our safety equipment range includes:

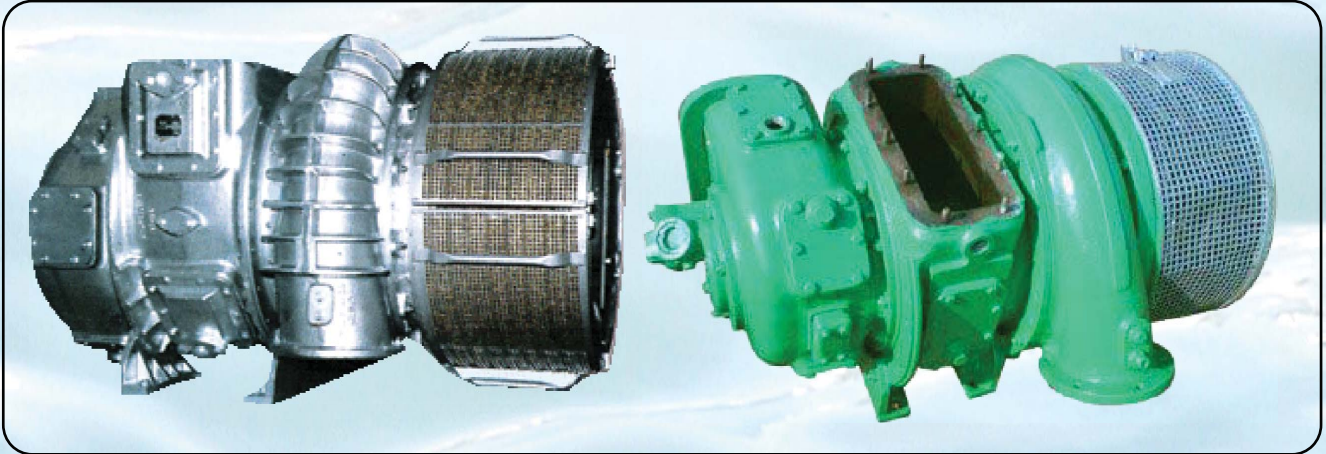
- Head protection equipment
- Eye and face protection equipment
- Hearing protection equipment
- Respiratory protection equipment
- Body protection equipment
- Hand protection equipment
- Foot protection equipment
- Protection from falls

Marine Turbochargers

Jupiter has recently supplied, installed and overhauled a wide range of marine turbochargers for fleet operators, cruise ships and offshore platforms.

We also offer comprehensive parts/maintenance kits - covering such items as gaskets, bearings and seals - as well as new or re-conditioned rotor assemblies and casings, all supplied with warranties of at least 12 months and, when required, classification certificates.

Committed to providing solutions to meet all budgetary requirements, we also provide health-restoring turbocharger overhauls as an alternative to replacements.



Marine Transmission

Jupiter offers a range of advanced gearing solutions to meet even the most demanding marine transmission requirements. We supply one and two speed transmissions for engines ranging from 27HP to 14,000HP, as well as a wide range of interchangeable spares.

Compact, hydraulically operated transmissions, including 2-Speed versions, are suitable for pleasure craft and other fast vessels. Larger models are generally designed and made for defence craft and high-speed ferries. For commercial, ocean-going vessels such as freighters and tankers, heavy-duty transmissions with various PTO's and PTI's are integrated with medium-speed diesel engines.

Our experienced, technically minded staff can help with gear selection or gear replacement and will be only too pleased to discuss and assist with all of your transmission needs.

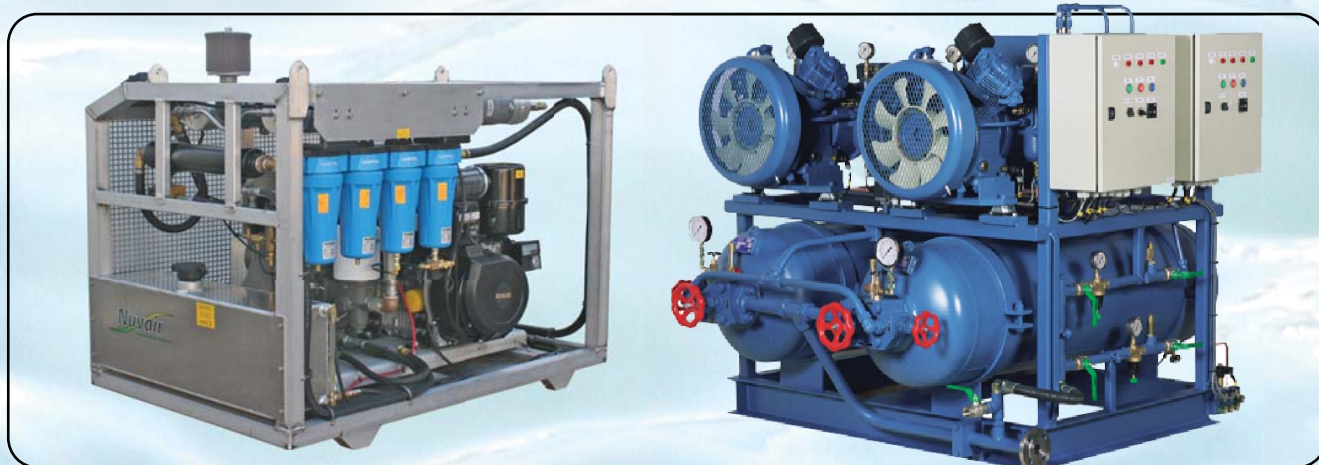


Marine Compressors

Built to operate in ambient temperatures of up to 55°C, Jupiter range of air compressors offer intuitive monitoring interfaces and robust, dust-free gearboxes.

We offer single stage, air-cooled reciprocating compressors (down to 25HP) and multi-stage, water-cooled reciprocating compressors (up to 3000HP).

We also supply coolers, dryers, motors, control units and - to help you preserve the life-span of your existing compressor/s - a comprehensive range of spare parts and maintenance services.



Marine Pumps

Our experienced, technologically savvy staff can assist our clients in identifying and selecting the right pump for a wide range of marine applications. We also provide installation/engineering/overhaul services as well as a comprehensive range of spare parts.

Our marine pump range covers:

- Air Operated Piston Pumps
- Air Pumps
- Engine Cooling Pumps
- Axial Flow Pumps
- Barrel Pumps
- Bilge Pumps
- Boiler Feed Pumps
- Centrifugal Pumps
- Chemical Pumps
- Deep Well Pumps
- Diaphragm Pumps
- Electric Motor Driven Pumps
- Fire Fighting Pumps
- Fuel Injection Pumps
- Gear Pumps
- High Pressure Pumps
- Lubricating Oil Pumps
- Marine Pumps

- Piston Pumps
- Plunger Pumps
- Process Pumps
- Rotary Pumps
- Seawater Pumps
- Screw Pumps
- Sludge & Sewage Pumps
- Submersible Pump
- Vane Pumps
- Water Pumps



Marine Separators

Jupiter supplies a comprehensive range of centrifugal separators (also referred to as oil separators or oil purifiers). Centrifugal separators purify diesel oil, lubricating oil, bio diesel and other fuels. In the interests of efficiency and environmental friendliness, marine separators should be fit for purpose and well maintained.



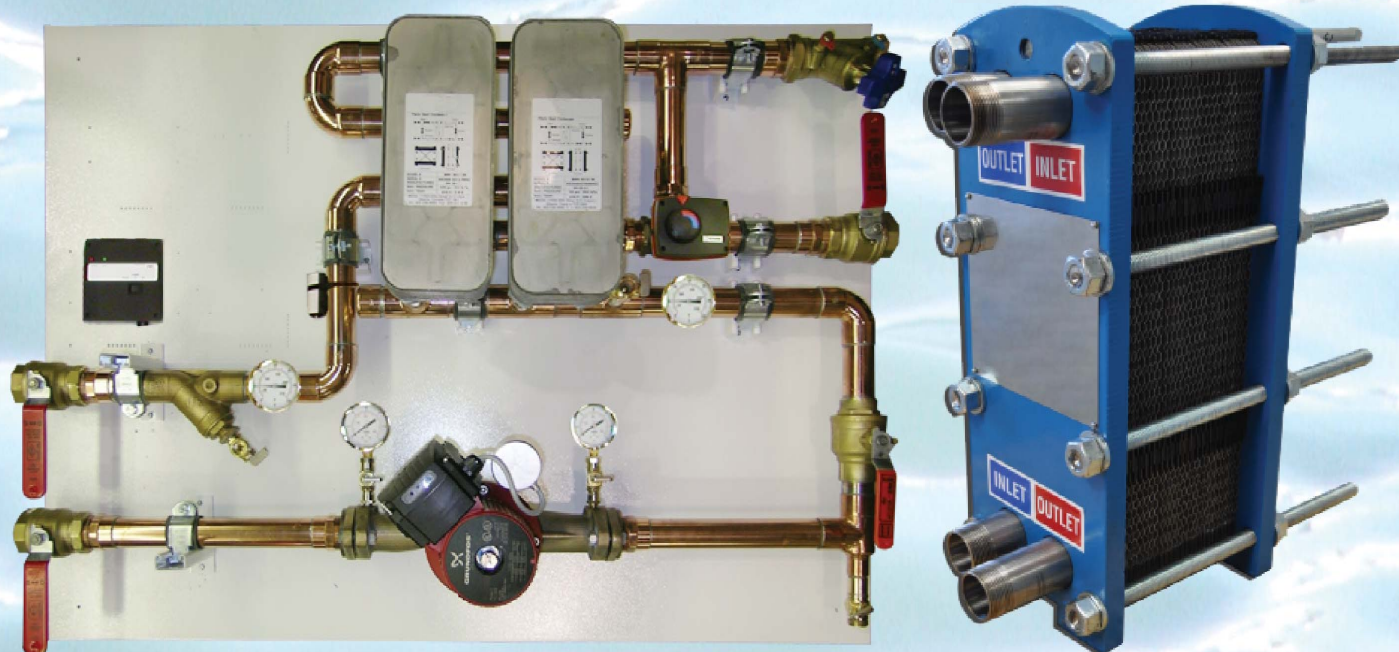
Marine Heat Exchangers

Britannia Marine is one of the industry's largest suppliers of marine charge air coolers, offering a wide range to suit various applications.

Whether you operate a tanker, container ship or cruise liner, we'll help you find a cost-effective, reliable marine heat exchanger solution to suit your particular requirements.

As well as possessing a considerable amount of experience in providing heat exchangers for marine applications, we are also well versed in the supply of heat exchangers for the power generation market.

Plate heat exchangers (offered both new and re-conditioned) are popular with customers for whom space is an issue; efficient in transferring heat to both liquids and gasses.



Marine Boilers

Boilers are used aboard ships to for such processes as pumping, heating, cooling, cleaning and hot-water.

Jupiter is a leading supplier of genuine and OEM marine boilers and spare parts.

Our marine boiler range includes:

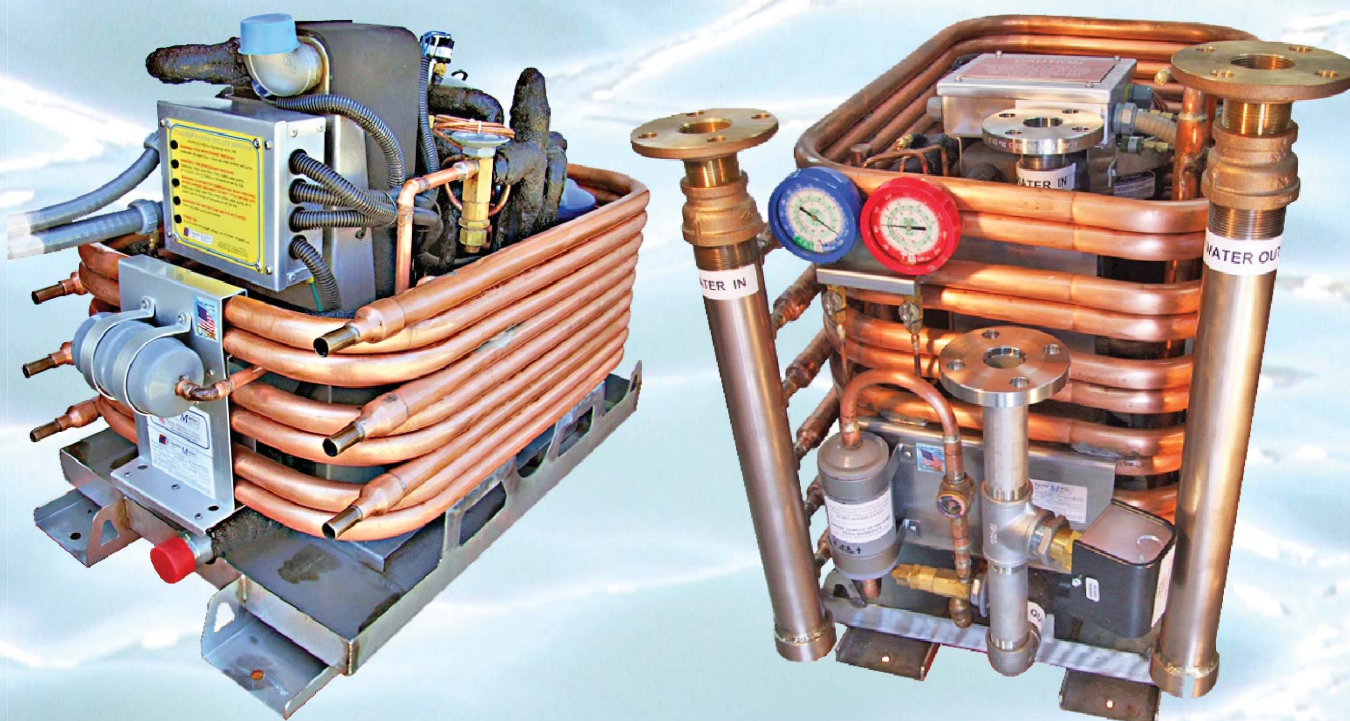
- Integral furnace naval boilers
- Integral furnace merchant boilers
- Reheat boilers
- Coal-fired marine boilers
- Auxiliary package marine boilers
- Waste heat marine boilers
- Oil burners
- Auxiliary equipment



Marine Air-conditioning

Jupiter provides a wide range of versatile marine cooling solutions. Well aware that different ships require different systems, we carefully assess each clients' particular needs, paying close attention to every minute detail. From individual engine room ventilation to exclusive cabin air-conditioning, our expertise in high-standard regulation technology ensures optimal results, even in the tightest spaces.

We also provide comprehensive and efficient parts supply as well as maintenance and overhaul services. Our experience in emergency response coupled with our global reach ensures that your ship's downtime will be kept to a minimum.



Marine engines

Getting the best from your marine diesel engine will save you money and increase efficient work time. Our expert team of marine engineers will provide you with a comprehensive, technically superior one-stop-service – and be there for you, 24/7.

Commercial marine diesels

Commercial operators of coastal traders, commercial fishing boats, passenger ferries and other commercial craft come to us to keep their vessels running efficiently and minimize downtime.



They also choose us for the supply and installation of major peripherals such as winches and hydraulic anchor winches.

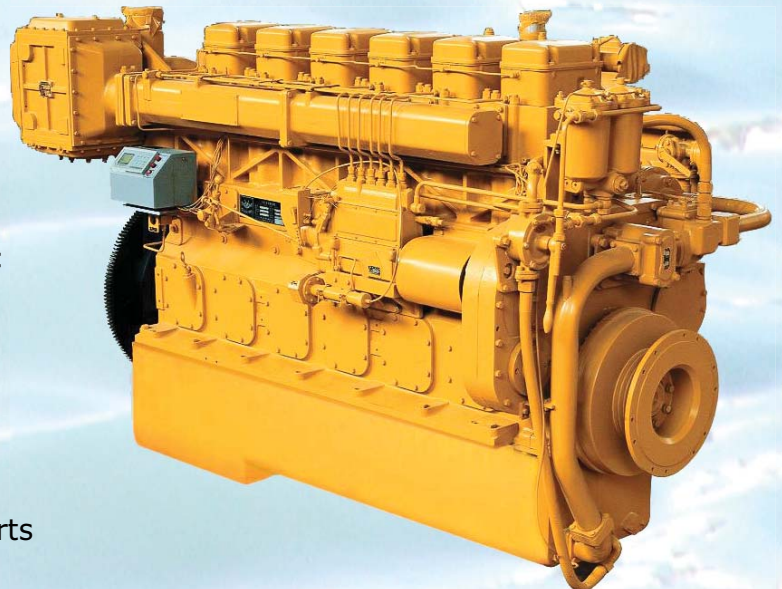
Whether you're hauling nets in heavy seas, plying the Pacific Island and coastal trade routes, or carrying passengers to and fro across the harbour, the safety of your crew and passengers is paramount. So, don't leave it to chance - make the right choice and call us as soon as possible.

At Jupiter, we work with you to ensure a regular servicing and maintenance programme is developed to suit your schedule - and the nature of your business.

Your one-stop-shop service

See us for a complete one-stop-shop service for marine diesel engines:

- Marine engines for sale
- Second-hand marine engines for sale
- Marine gearboxes, transmission and steering systems
- Breakdown repairs – including hydraulic hoses and water pumps
- Reconditioned marine engines
- Quality rebuilds
- Regular maintenance and servicing
- Installation of major peripherals
- Sourcing and sales of marine engine parts



Marine engines

Rebuilt marine engines

Our reputation for quality rebuilds is second to none – we strip down and rebuild from scratch with genuine Gardner parts to create a brand new marine engine in zero-hours condition.

Marine engines recondition

We stand by our reconditioned engines, which undergo thorough cleaning and repairs.

Used marine engines

We pay good money for second-hand marine engines for reconditioning or rebuilding, and then resell them. If you have an old Gardner or any other marine engine or diesel engine component that you want to sell, give us a call - we could be interested. Or, if you're on the look-out to buy a top quality second-hand engine.



Marine gearboxes

If it's a new gearbox you're after, we can supply you with a quality Dong-I. We also repair all makes of gearboxes - whether it's a worn-out clutch pack or worn-out bearings and gears, we can strip and recondition them. If we don't have the specialised tools required, we can make them.

Marine engine parts

Are you after Deutz, Gardner or Lister parts, or parts for marine applications such as onboard gensets? At Shaw Diesels, you'll find a wide range of parts in stock for quick access, and we can quickly source products that aren't on our shelves.

Marine generators

We supply and service diesel generators for commercial vessels and larger pleasure craft. Whether it's your commercial fish freezers or lighting for ferry passengers, or your refrigerators for refreshments, we can help you ensure they're all kept in working order.

Electrical Services

Our qualified marine electricians follow all guidelines and ship standards as outlined by classification societies. We only use marine grade materials and equipment, and provide approval certificates. Here are just a few of the electrical services we provide:

- Data Networks
- Power Distribution – Equipment, cabling, installation and set-up for Power Panels, Transformers, UPS Systems, etc.
- Automation and Control Systems
- Fire Detection and Prevention Systems
- CCTV - Surveillance and Security Systems
- Wi-Fi Communication Systems
- General Electrical Service for Revitalization and Refurbishment



Mechanical Services

Jupiter provides Mechanical Services of all types. Some of the specific services we provide include:

- Fischer Piping Systems
- Metallic Pipe (Carbon Steel, Galvanized, Copper, Stainless Steels)
- Loro, Geberit, Pressfit, Aquatherm and other piping systems
- HVAC Duct Repair
- Steel and Aluminum Structural Fabrication and Installation
- Expert Welding By Certified Welders

Lifting & Testing

Jupiter offers a comprehensive rigging, testing and inspection service, including:

- Lifting machinery and tackle
- Maintenance
- Testing
- Inspection
- Magnetic Particle Inspection

All products are backed by full maintenance and servicing arrangements tailored to your requirements. Work can be carried out in our workshops or at your own premises to minimise downtime We also provide a complete testing and inspection services.

Jupiter can supply a wide range of lifting equipment backed up by a full testing, inspection, Magnetic Particle Inspection (MPI) and maintenance service covering all types of lifting machines and lifting gear



Fabrication, Welding & Coating

Jupiter have provided welding, fabrication and corrosion engineering services from our Plymouth Base since before 1988.

We have established a good reputation under controlled procedures. All works are maintained to conform to all Technical Specifications and overseen by our own Paint Inspector and Welding/Fabrication Technical Team resulting in a clear and concise Quality package to accompany all of our customer's projects.

Our Corrosion Engineering and Welding outfit is fully mobile and capable of undertaking projects outside of our location.

Having a very flexible and diverse workforce, we have experience in most industrial sectors including nuclear facilities, naval vessels both surface and sub-surface, dockyard infrastructure, railways, construction and civil engineering.

Component Manufacturing

Jupiter provides a repair service of offshore equipment including:

- **On-site Socketing** – Fully trained personnel provide an on-site socketing service for all diameter of steel wire ropes
- **On-site Spooling** – A range of spooling and coiling units to provide on-site installation of wire ropes such as tow wires and anchor lines. Present capacity extends to 4000m x 76mm SWR
- **Rigging** – An in-house rigging department manufactures mooring grommets, cargo nets and splicing of fibre rope eyes of any size
- **Mechanical Swaging** – Wire rope pennants and slings up to 76mm are produced as required



Rigging Lofts

Within current legislation Jupiter assumes responsibility for a client's lifting equipment.

- Purchase of client's existing gear including spares
- Provision of on-site rigging lofts, manned or unmanned, on a contract basis
- Leasing of client's facility
- Control of sub-contractors lifting equipment
- Recruitment of existing lifting gear staff
- Provision of a central service point and/ or central hire store at a suitable location
- Around-the-clock availability of Jupiter Industries' in-house engineers
- Certification Management

All inspection, repair and manufacturing procedures are controlled through the Quality Management System. All products are supplied with traceable Test and Examination Certificates and Inspection Records.

Erection & Commission

Installation of marine machinery experience and attention to detail to prevent potentially dangerous safety issues. JEMS offers unparalleled experience and expertise in start-up Installation of the following:

- Electrification Systems
- Modernizations
- Relocations



Preventive Maintenance

The advantage to this maintenance is a reduction in problems and increased reliability. Some of the problems that you may see with improper maintenance are:

- Cheacking & Cleaning Machine parts
- Replace parts if necessary
- Inspect and lubricate machine gears

Periodical maintenance

JEMS offers customized maintenance programs for your operation. From compliance and repairs to preventative & periodical maintenance, JEMS has the right maintenance program for your application, including:

- Compliance Programs
- Preventative Maintenance Programs
- Reliability Based Maintenance Programs
- Maintenance Contracts



Used Marine equipments

We have been export used ships and used marine equipments since 1988. We have used marine equipments and We are looking for the buyer who can purchase

- GPS Map
- Boat Heating system
- Split barges
- Satellite Phones
- Floating cranes

Marine Equipments & Spare Parts

Navigation Systems



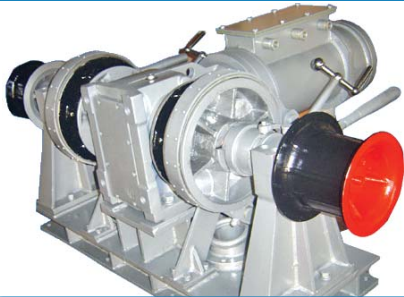
GPS navigator with a SBAS receiver designed for coastal ships, fishing boats and pleasure craft.

Fish Finder



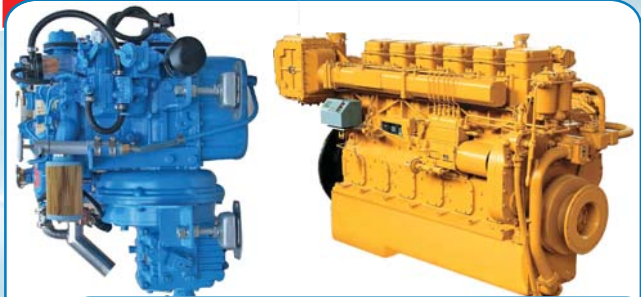
Fishfinder included dual-beam transducer provides excellent shallow-water performance.

Marine Deck Equipment



Portable gas detector specifically for maritime tankers. Include an infrared sensor for combustible gas monitoring in

Engine & Spares



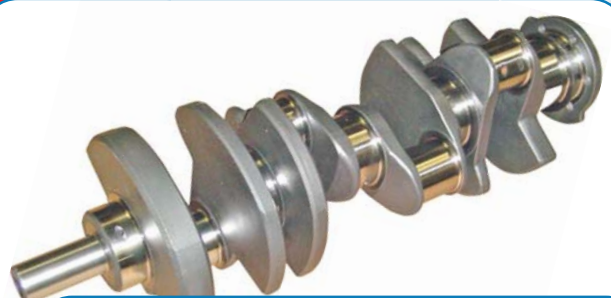
6 in-line marine diesel engine , Rated power: 330kW~540kW , Rated speed: 1000rpm~ 1450 rpm, Specific fuel consumption: ≤ 205 g/kW. H

Thruster Large



Marine Cranes are hydraulic lifting appliances On a quay, deck, offshore platforms, driven by electro-hydraulic power units.

Crank Shaft



Portable gas detector specifically for maritime tankers. Include an infrared sensor for combustible gas monitoring in inserted tanks.

Oil Filtration Unit



Correct treatment of Heavy Fuel Oil is essential to protect the diesel injection system from wear and damage.

Marine Auxiliary Machinery



Mechanical hand brake (for emergency), Slip ring device, Emergency stop. The winch has a total of 3, 4 brackets for lifting the winch

Rebuilding a propeller blade



Building a new rudder



Inspection of bearings



Boiler Re-furbishment



Generator Pre-refurbishment



Rebuilding a propeller boss





Inverter



Bow Thruster Hydraulic & Electrical





 H.O: INDIA

(JEMS) Jupiter Equipments Manufacturer & Supplier Pvt Ltd.

Main Road, Pathur 613705, Tiruvarur-Dt, Tamilnadu, S. India

Tel: +91-4366-232333, Mob: +91-95000 60000

E-mails: info@jems4u.com india@jems4u.com

Skype: [jupiter-india-h.o](https://www.skype.com/jupiter-india-h.o) Web: www.jems4u.com

Main Branch

 **BAHRAIN**

JEMS Co.W.L.L

Salmabad, Kingdom of Bahrain

E-mail: info@jems4u.com

Skype: [jupiter-bahrain-br](https://www.skype.com/jupiter-bahrain-br)

 **CHINA**

JEMS Trading Co Ltd.

Shanghai, China

E-mail: china@jems4u.com

Skype: [jupiter-china-br](https://www.skype.com/jupiter-china-br)

 **QATAR**

Industrial Estate, Doha Qatar

E-Mail: qatar@jems4u.com

Skype: [jupiter-qatar-br](https://www.skype.com/jupiter-qatar-br)

 **DUBAI UAE**

Industrial Zone-1, Dubai UAE

E-Mail: dubai@jems4u.com

Skype: [jupiter-dubai-br](https://www.skype.com/jupiter-dubai-br)

 **SAUDI ARABIA**

Industrial Area, Dammam

Skype: [jupiter-saudi-br](https://www.skype.com/jupiter-saudi-br)

 **SINGAPORE**

Jurong West Singapore

Skype: [jupiter-singapore-br](https://www.skype.com/jupiter-singapore-br)

We Solicit Agent, Dealers, Distributors, Marketing.
Technical Service Support Enquiries & Information:

Contact for Middle East :

R. Jehan (Sales & Sr Manager)

Mob: 00973-39236574

Tel : 00973-17-874667

E-Mail: info@jems4u.com

